

Article datasheet

## Blade Terminal 2.8x0.8 | 0.5-1 mm<sup>2</sup> Tin-Plated Brass

Article-No.: 012.27.281

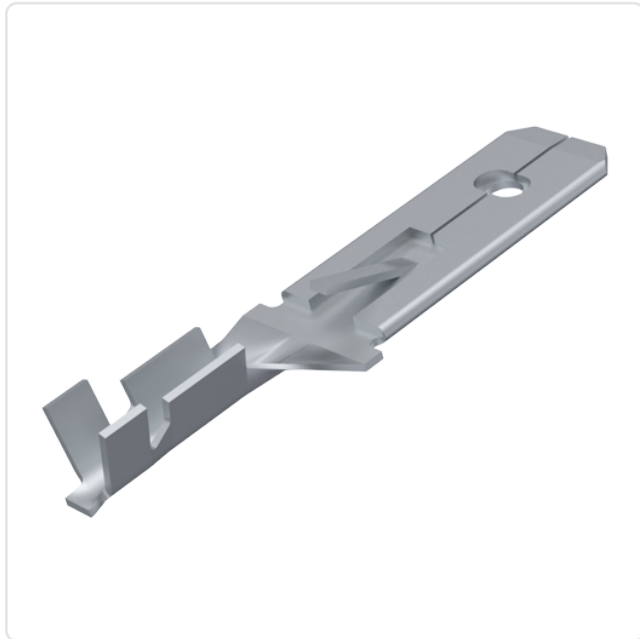
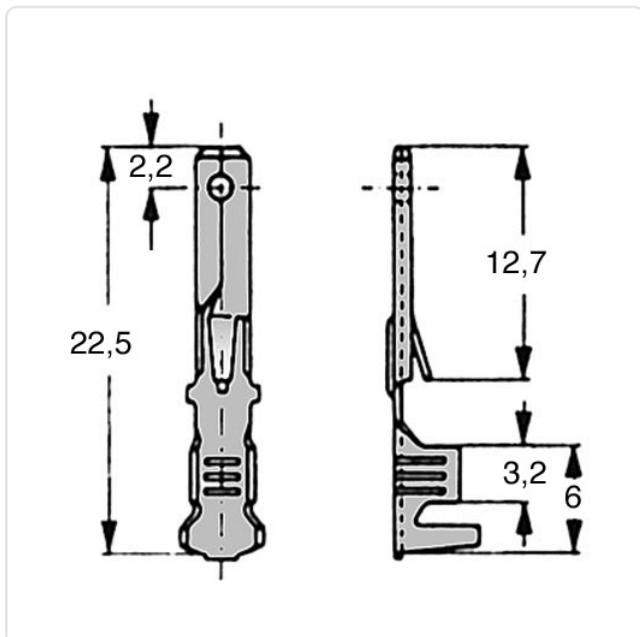


Image may be similar

Bending Angle [°]:	0
Finish:	Tin-Plated
Material:	Brass
Material Group:	Brass
Plug-In Length [mm]:	12.7
Size [mm]:	2.8x0.8
Tabs:	1
Wire Cross Section [mm²]:	0.5-1.0
Weight:	0.36g
Conformities:	<div>Reach COMPLIANT</div> <div>RoHS COMPLIANT</div> <div>SVHC NOT COMPLIANT</div>



You can find all  
information on the web on  
our article detail page



Would you like individual advice?

We look forward to your email to [products@ettinger.de](mailto:products@ettinger.de).

Subject to change and errors.