

Article datasheet

Blade Terminal 8x 6.3x0.8 | 90° | ø4.1 Tin-Plated Brass

Article-No.: 019.64.445

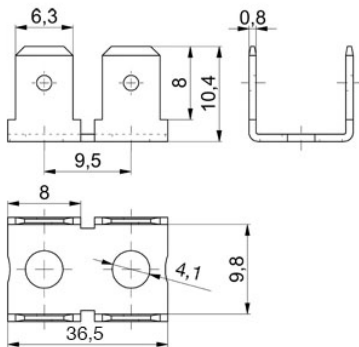


Image may be similar

Bending Angle [°]:	90
Finish:	Tin-Plated
Length [mm]:	36.5
Material:	Brass
Material Group:	Brass
Mounting Hole [mm]:	4.1
Plug-In Length [mm]:	8
Size [mm]:	6.3x0.8
Tabs:	8
Weight:	5.2g
Conformities:	<div> <div>Reach</div> <div>COMPLIANT</div> </div> <div> <div>RoHS</div> <div>COMPLIANT</div> </div> <div> <div>SVHC</div> <div>COMPLIANT</div> </div>



You can find all
information on the web on
our article detail page



Would you like individual advice?

We look forward to your email to products@ettinger.de.

Subject to change and errors.