

Article datasheet

## Countersunk Screw ISO2009 M8x25 Polyamide 6.6 natural slotted

Article-No.: 001.46.7070

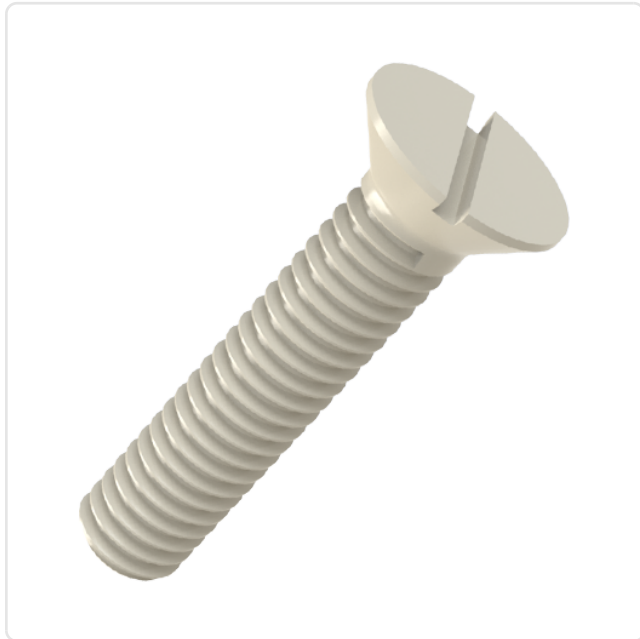
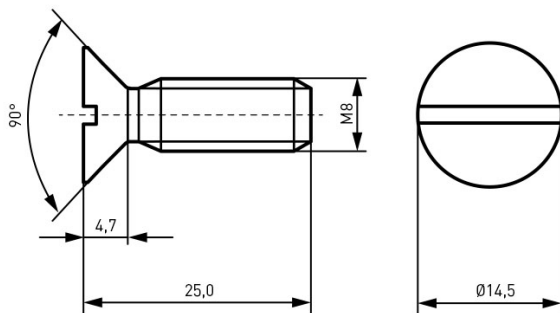


Image may be similar

|                     |                  |
|---------------------|------------------|
| Color:              | Natural          |
| DIN/ISO:            | DIN963 / ISO2009 |
| Drive Type:         | Slotted          |
| Head Diameter [mm]: | 14.5             |
| Head Height [mm]:   | 4.7              |
| Head Shape:         | Countersunk Head |
| Length [mm]:        | 25               |
| Material:           | PA 6.6           |
| Material Group:     | Plastic          |
| Thread Size:        | M8               |
| Weight:             | 1.352g           |
| Conformities:       |                  |



You can find all  
information on the web on  
our article detail page



Would you like individual advice?

We look forward to your email to [products@ettinger.de](mailto:products@ettinger.de).

Subject to change and errors.