

Article datasheet

Self-Clinching Nut M6 | 1.4 A2 Stainless Steel Passivated

Article-No.: 002.14.369

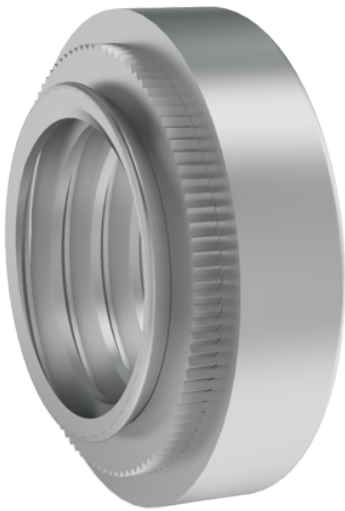


Image may be similar

Area of Application:	For Metallic Materials
Finish:	Passivated, Clear
Height [mm]:	4.08
Material:	Stainless Steel AISI 304 / A2
Material Group:	Stainless Steel
Minimum Edge Distance [mm]:	8.6
Outer Diameter [mm]:	11.18
Panel Hole Ø [mm]:	8.75
Panel Thickness [mm]:	1,4
Thread Size:	M6
Weight:	2.61g
Conformities:	



You can find all
information on the web on
our article detail page

Would you like individual advice?

We look forward to your email to products@ettinger.de.

Subject to change and errors.

