

Article datasheet

Insulation Sleeve for countersunk screw M4

Article-No.: 003.28.046

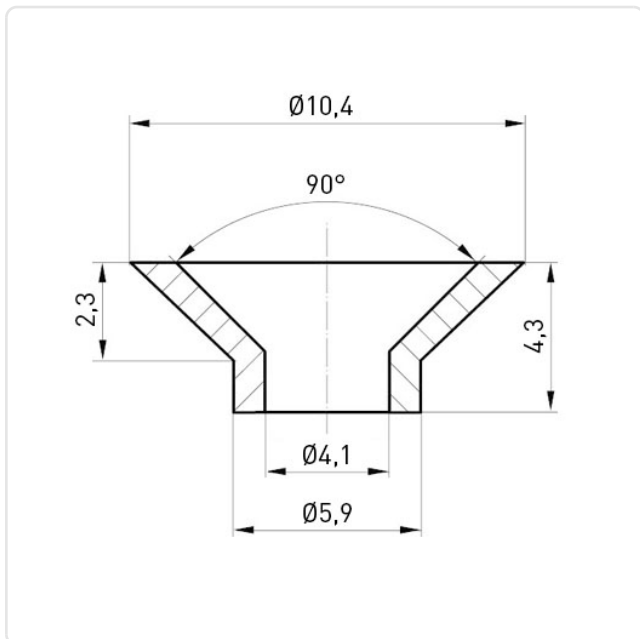


Image may be similar

Inner Diameter [mm]: 4.1
Lug Diameter [mm]: 5.9
Material: PA 6.0
Material Group: Plastic
Model: Insulating Sleeve for Countersunk Screw
Outer Diameter [mm]: 10.4
Weight: 0.09g
Conformities:



You can find all
information on the web on
our article detail page



Would you like individual advice?

We look forward to your email to products@ettinger.de.

Subject to change and errors.