

Article datasheet

Captive Screw M2.5x12 Flat Head A1 Plain Stainless Steel Slotted

Article-No.: 001.84.259

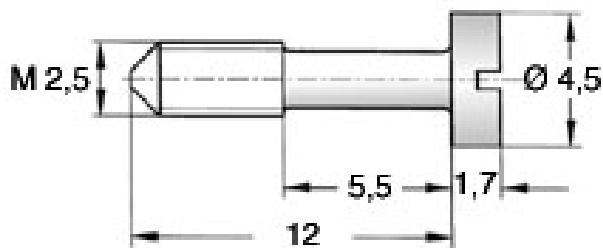


Image may be similar

| | |
|----------------------------|-------------------------------|
| Drive Type: | Slotted |
| Finish: | Plain |
| Head Diameter [mm]: | 4.5 |
| Head Height [mm]: | 1.7 |
| Head Shape: | Flat Head |
| Length [mm]: | 12 |
| Material: | Stainless Steel AISI 303 / A1 |
| Material Group: | Stahl rostfrei |
| Reduced Shank Length [mm]: | 5.5 |
| Thread Size: | M2.5 |
| Weight: | 0.49g |
| Conformities: | |



You can find all
information on the web on
our article detail page



Would you like individual advice?

We look forward to your email to products@ettinger.de.

Subject to change and errors.