

Article datasheet

Captive Screw M2.5x13 Flat Head Nickel-Plated Steel 1.0718 Slotted

Article-No.: 001.84.253

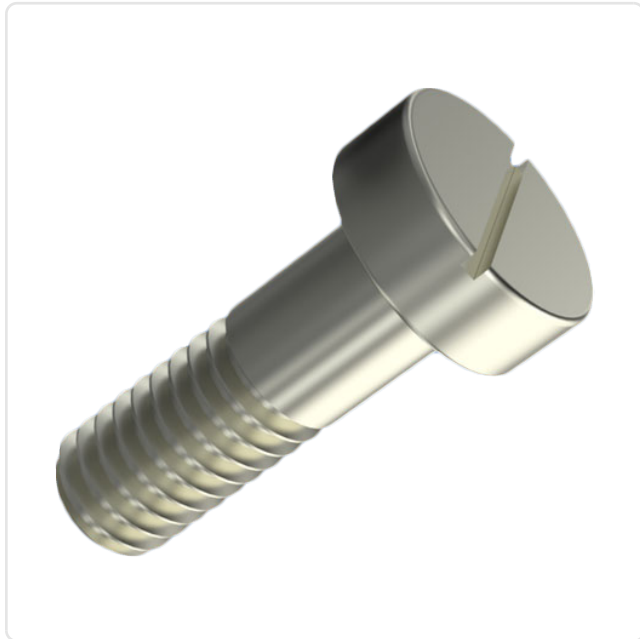


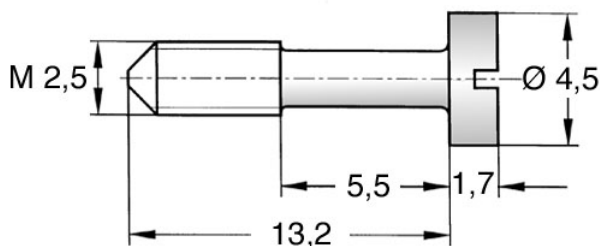
Image may be similar

Drive Type:	Slotted
Finish:	Nickel-Plated, 3 µm, E1E
Head Diameter [mm]:	4.5
Head Height [mm]:	1.7
Head Shape:	Flat Head
Length [mm]:	13
Material:	Steel 4.8
Material Group:	Stahl
Reduced Shank Length [mm]:	5.5
Thread Size:	M2.5
Weight:	0.47g
Conformities:	



You can find all information on the web on our article detail page

[Captive Screw M2.5x13 Flat Head Nickel-Plated Steel 1.0718 Slotted](#)



Would you like individual advice?

We look forward to your email to products@ettinger.de.

Subject to change and errors.