

Article datasheet

## SEMS Screw ISO14583 TX Z4-1 M6x10 Galv. ST 8.8 Washer + Spring Lock Washer

Article-No.: 081.55.646

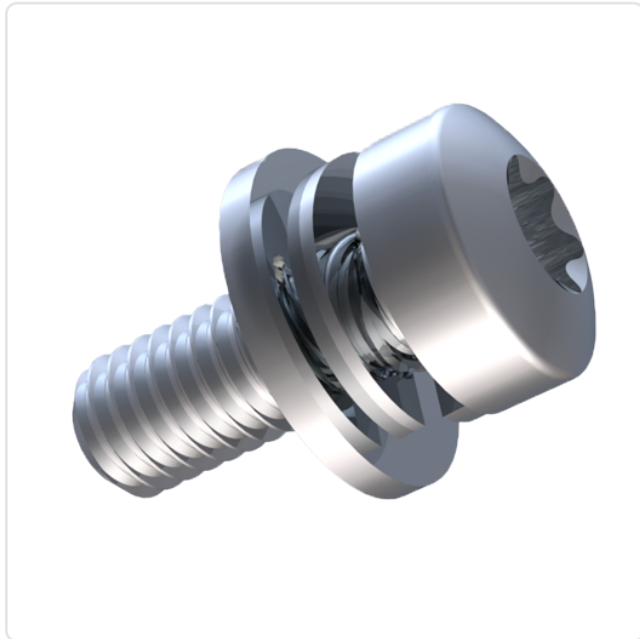
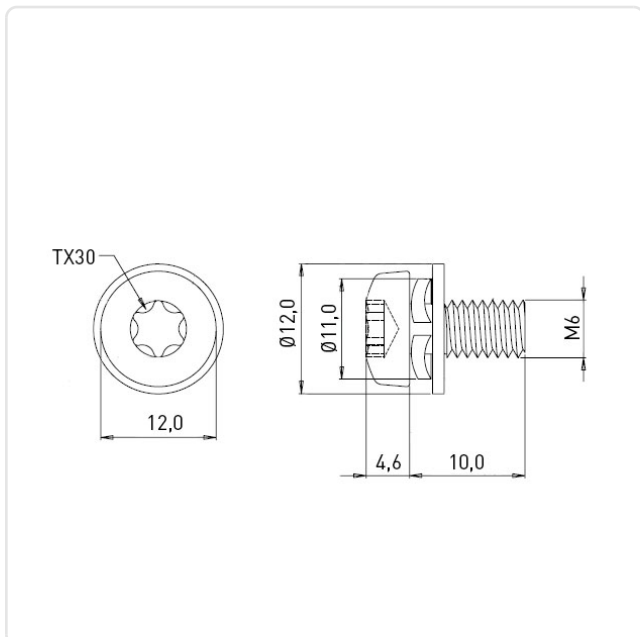


Image may be similar

Actuator Size:	Torx T30
Combination:	Washer DIN6902-1 and Spring Lock Washer DIN6905
DIN/ISO:	ISO14583
Drive Type:	TORX
Finish:	Galvanized, Blue, 5 µm, A2K
Head Diameter [mm]:	12
Head Height [mm]:	4.6
Head Shape:	Pan Head
Length [mm]:	10
Material:	Steel 8.8, lead-free
Material Group:	Steel
Thread Size:	M6
Weight:	6.34g
Conformities:	<div>Reach COMPLIANT</div> <div>RoHS COMPLIANT</div> <div>SVHC COMPLIANT</div>



You can find all  
information on the web on  
our article detail page

Would you like individual advice?

We look forward to your email to [products@ettinger.de](mailto:products@ettinger.de).

Subject to change and errors.