

Article datasheet

SEMS Screw ISO14583 TX Z4-1 M2.5x10 Galv. ST 8.8 Washer + Spring Lock Washer

Article-No.: 081.55.246

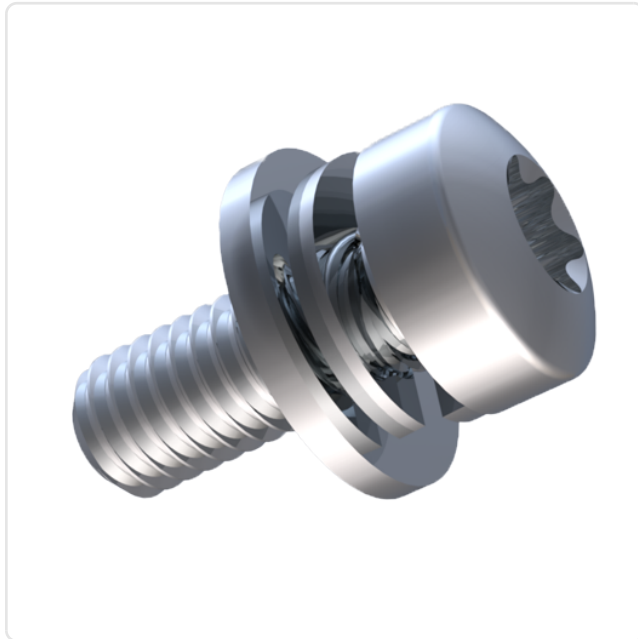
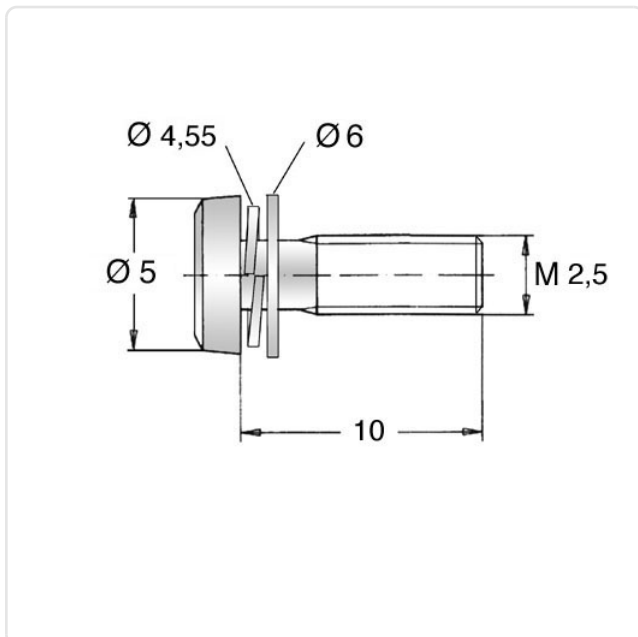


Image may be similar

Actuator Size:	Torx T8
Combination:	Washer DIN6902-1 and Spring Lock Washer DIN6905
DIN/ISO:	ISO14583
Drive Type:	TORX
Finish:	Galvanized, Blue, 5 µm, A2K
Head Diameter [mm]:	5
Head Height [mm]:	2.1
Head Shape:	Pan Head
Length [mm]:	10
Material:	Steel 8.8, lead-free
Material Group:	Steel
Thread Size:	M2.5
Weight:	0.65g
Conformities:	<div>Reach COMPLIANT</div> <div>RoHS COMPLIANT</div> <div>SVHC COMPLIANT</div>



You can find all
information on the web on
our article detail page

Would you like individual advice?

We look forward to your email to products@ettinger.de.

Subject to change and errors.