

Article datasheet

## Double End Sleeves 2x1.5mm<sup>2</sup>/12mm Polypropylene,black

Article-No.: 018.82.153

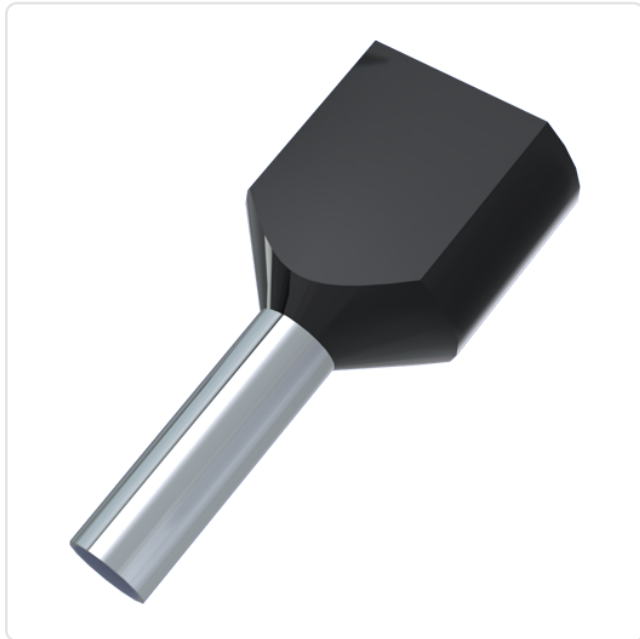


Image may be similar

Color:	Black
Finish:	Tin-Plated
Insulation:	Polypropylene
Length [mm]:	20
Material:	Electrolytic Copper
Material Group:	Electrolytic Copper
Plug-In Length [mm]:	12
Wire Cross Section [mm <sup>2</sup> ]:	1.5
Weight:	0.21g
Conformities:	<div>Reach COMPLIANT</div> <div>RoHS COMPLIANT</div> <div>SVHC COMPLIANT</div>



You can find all  
information on the web on  
our article detail page

Would you like individual advice?

We look forward to your email to [products@ettinger.de](mailto:products@ettinger.de).

Subject to change and errors.

