

Article datasheet

Double End Sleeves 2x1.5mm² 8mm Polypropylene black

Article-No.: 018.82.150

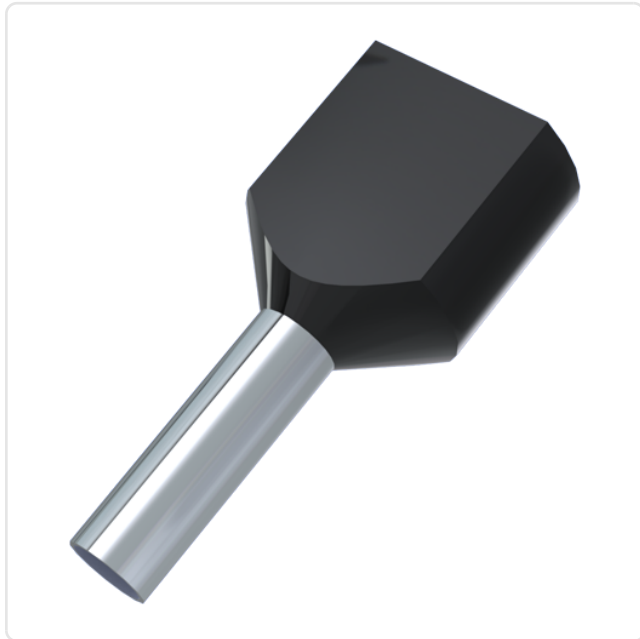


Image may be similar

Color:	Black
Finish:	Tin-Plated
Insulation:	Polypropylene
Length [mm]:	16
Material:	Electrolytic Copper
Material Group:	Electrolytic Copper
Plug-In Length [mm]:	8
Wire Cross Section [mm ²]:	1.5
Weight:	0.17g
Conformities:	<div>Reach COMPLIANT</div> <div>RoHS COMPLIANT</div> <div>SVHC COMPLIANT</div>



You can find all
information on the web on
our article detail page

Would you like individual advice?

We look forward to your email to products@ettinger.de.

Subject to change and errors.

