

Article datasheet

## Captive Screw M2.5x11 Pan Head Nickel-Plated Brass Slotted

Article-No.: 001.85.243

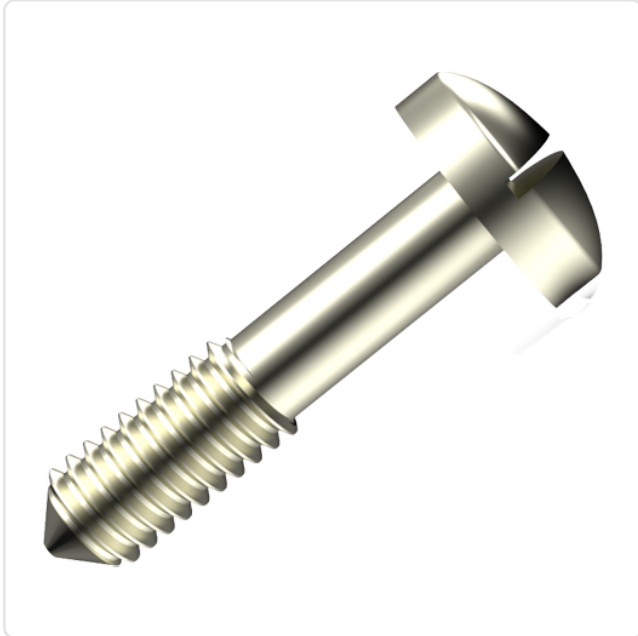
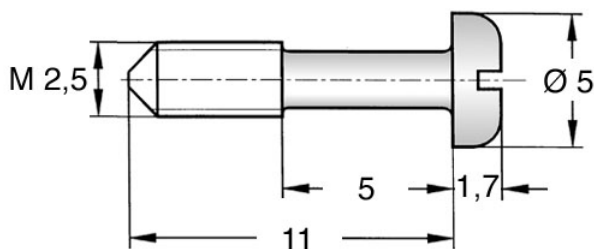


Image may be similar

Drive Type:	Slotted
Finish:	Nickel-Plated, 3 µm, E1E
Head Diameter [mm]:	5
Head Height [mm]:	1.7
Head Shape:	Pan Head
Length [mm]:	11
Material:	Brass CW614N / CuZn39Pb3
Material Group:	Brass
Reduced Shank Length [mm]:	5
Thread Size:	M2.5
Weight:	0.52g
Conformities:	



You can find all  
information on the web on  
our article detail page



Would you like individual advice?

We look forward to your email to [products@ettinger.de](mailto:products@ettinger.de).

Subject to change and errors.