

Article datasheet

Blind Nut M6 Panel Thk. Range 0.4-2.8mm Neoprene black

Article-No.: 002.13.160

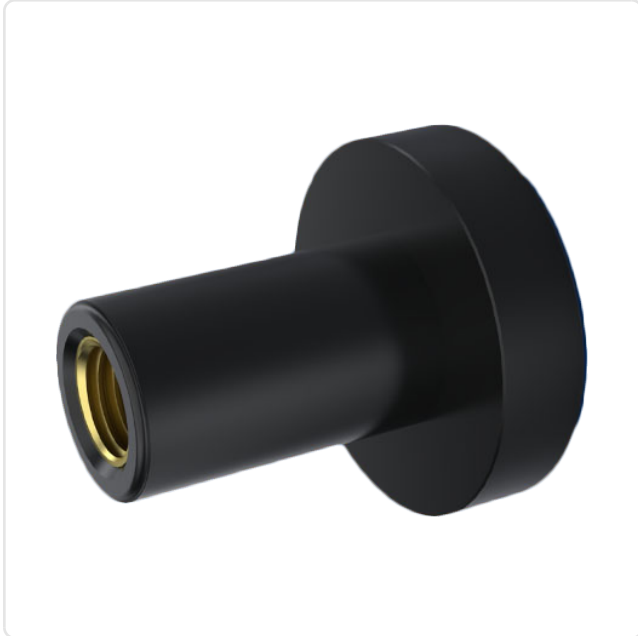


Image may be similar

AF / OD [mm]:	16
Color:	Black
Height [mm]:	16
Material:	CR - Polychloroprene
Material Group:	Plastic
Mounting Hole [mm]:	13
Panel Thickness Range [mm]:	0,4-2,8
Thread Size:	M6
Weight:	3.78g
Conformities:	



You can find all information on the web on our article detail page

Would you like individual advice?

We look forward to your email to products@ettinger.de.

Subject to change and errors.

