

Data Sheet

Terminal Lug $\varnothing 3.2/5\text{mm}$ for 1mm^2 AWG18 Brass tinned - non insulated

Part No.: 018.07.315

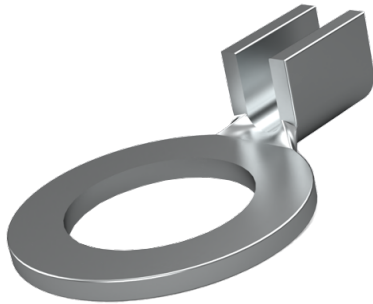
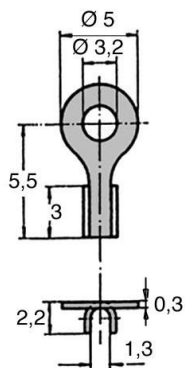


Image for illustrative purposes only.



All information is available
online on our detail product
page!

Looking for some advice for your specific situation?
If so, please don't hesitate to e-mail us at products@ettinger.de

Subject to changes and errors.